

November
2023

MEMO

Mid-Eden Magazine

with news
from the
Parishes of
The Cross Fell
Group



Pine cone

Sponsored by _____

Langwathby Stores & Post Office.
The VIC, Culgaith.
Tithe Cottage Furnishings.
Parish Councils: Culgaith, Langwathby
PCC of Langwathby
Langwathby Methodist Chapel

November – the month of apple-bobbing, bonfires, fireworks and laying wreaths of poppies at the village war memorial in remembrance of those who gave their lives in the two World Wars and other conflicts so that we might live in peace and freedom*.

Of course, even the joyful firework celebrations, which light up the cold, wintry skies with flashes of colour like giant heavenly chrysanthemum blooms, are themselves in remembrance of the failed gunpowder plot all those many years ago.

It's good to stop what we're doing every now and again to remember the people and events that have shaped our history and helped to make our lives what they are today. But it is also somewhat sobering as we think of those who are no longer with us and perhaps try to avoid contemplating our own mortality.

There's another act of remembrance that takes place in many of our churches and chapels each week – services of Holy Communion where we remember – with bread and wine – the time when Jesus gave his life, dying on the cross in order to buy forgiveness and new life not only for his friends, but for his enemies too and, indeed, for all of us down through the centuries who will accept our need of him. In this dark and broken world, Jesus is the only one who can offer real hope and healing of past hurts and future fears.

God bless you.

Reverend Lindsay Harrod

* For local Remembrance Sunday services please see back cover.

CLERGY CONTACT NUMBERS

We are here to serve you and you are welcome at any of our community groups and services.

Details are on our website: <https://eastofedenmc.org.uk>

The following **EEMC** ministers can be contacted by email or telephone:

Rev'd Canon Katharine Butterfield Tel: 01768 898176,

Email: kmbutterfield@btinternet.com

Rev'd Dave Milner Tel: 01768 863209, Email: dave@revmilner.plus.com

Rev'd Keith Speck Tel: 01768 898257, Email: keithspck1@gmail.com

Rev'd Lindsay Harrod Tel: 01768 881769, Email: harrod.lindsay@yahoo.co.uk

DATES FOR YOUR DIARY

OCTOBER 2023

29th	Thanksgiving & Remembering Service, Addingham Ch	3:00pm
29th	Film Night : My Big Fat Greek Wedding, Skirwith VH	4:30pm

NOVEMBER 2023

1st	Langwathby & Edenhall WI: Dabble Evening, Lang'by VH (p13)	7.30pm
1st	Wine Tasting, Culgaith VH (p6)	7.30pm
2nd	Meeting Point, Langwathby Methodist Ch (p12)	10.15am
3rd	Christmas Shopping - Langwathby Village Hall (p11)	7:00pm
4th	New Fellrunner Service commences (p2)	
4th	Daffodil Planting, Addingham Church	10:00am
4th	Eden Animal Rescue: Big Breakfast, Lang'by VH (p9)	10:30-2.00pm
6th	Culgaith Parish Council Meeting, Culgaith Victoria Inst (p4)	7.30pm
8th	Coffee Morning, Kirkland & Blencarn VH (p5)	10.30am-12.30pm
8th	Whist Drive, Blencarn Village Hall (p5)	7:00pm
10th	FOLS Xmas Bingo, Langwathby VH (p4)	7.00pm
11th	St Lukes Coffee Afternoon, Ousby Comm Centre (p5)	2.00pm-4.00pm
14th	Soup & Cake Lunch, Skirwith Village Hall (p10)	Noon-1.30pm
15th	Culgaith Village Hall AGM, Culgaith VH (p6)	7.00pm
16th	Oasis, Langwathby Methodist Ch (p12)	10.30am
16th	The VIC AGM, Victoria Institute, Culgaith (p11)	4.00pm
16th	Lang'by Fellowship: Craft Afternoon, Lang'by Methodist Ch (p9)	2.00pm
17th	Quiz Night with Pie & Pea Supper - Langwathby VH (p11)	
17th	Quiz Night, Kirkland & Blencarn VH (p5)	7.30pm
21st	Gardening Club: Water Gardens, Melmerby VH (p10)	7.30pm
22nd	Whist Drive, Blencarn Village Hall (p5)	7:00pm
22nd	Christmas Crafting, Culgaith Village Hall (p6)	7:00pm
23rd	Langwathby Parish Council Meeting, Langwathby VH (p3)	7.30pm
24th	Film: East Is East, Gamblesby VH (p12)	Food 7pm; Film 8.00pm
25th	Coffee Morning, Kirkland & Blencarn VH (p5)	10.30am-12.30pm
25th	Film: The Polar Express, Melmerby VH (p7)	3.00pm
25th	Film: Top Gun, Melmerby VH (p8)	8.00pm
30th	The VIC café: St Andrew's Day special, Culgaith VH (p11)	2.00-4.00pm
30th	Donelly & South's Christmas Cracker, Skirwith VH (p10)	7.30pm

DECEMBER 2023

15th	Family Bingo, Culgaith Village Hall (p6)	6.00pm
17th	Langwathby Children's Christmas Party, Lang'by VH (p9)	3.00-6.00pm
22nd	Hayley's Christmas Big Band, Langwathby Village Hall (p12)	7:00pm
27th	Melmerby Scar Challenge, Melmerby VH (p13)	From 8.45am

JANUARY 2024

6th	New Year Ceilidh, Culgaith Village Hall (p6)	7.00pm-10.00pm
-----	--	----------------



NEW FELLRUNNER SATURDAY SERVICES FOR SHAP AND LANGWATHBY



The Fellrunner Village Bus Group are pleased to announce **NEW SATURDAY SERVICES FROM SHAP TO PENRITH AND FROM LANGWATHBY TO PENRITH.**

The Traffic Commissioner has given permission for services to start from Saturday 4 November and the buses will run every Saturday, all year around.

The Shap to Penrith service will depart from The Greyhound, Shap, at 09.55 calling at all Shap bus stops and then travelling via Thrimby (10.04), Hackthorpe (10.05), Lowther Village (Castle and Gardens on request) (10.09), Clifton (10.14) to arrive at Penrith Bus Station at 10.30. The bus will drop at Sainsburys, King St, Aldi, Railway Station, Booths/Morrisons and Middlegate as required. Passengers will get three hours in Penrith with the return service leaving Penrith Bus Station at 13.30, returning as per the outward journey to arrive back in Shap at 14.00. Being based at Langwathby, the Fellrunner will also run a Saturday service from Langwathby Bus Shelter (09.00), Edenhall (09.04), to arrive at Penrith Bus Station at 09.20. This bus then continues (09.22) to Shap via all villages as above, offering Penrith residents without a car, the chance to visit Lowther Castle and Gardens with a return journey from the Castle and Gardens at 14.30. Passengers can also travel to Shap or any of the villages en route. A return service to Edenhall and Langwathby runs from Penrith Bus Station at 12.15 and at 15.00.

Fellrunner Chairman Kevin McGilloway said, "We are very pleased to be able to offer these new services to give passengers the opportunity to get to and from Shap and Langwathby to Penrith on Saturdays. We have been working with the Shap 106 Bus Group who have been unable to source a commercial operator to run the Shap services and we are pleased to be able to step in and help. Fellrunner is a volunteer-run community bus group using accessible minibuses to provide a service to nearly 60 Eden villages each week on routes that are not commercially viable, and we know that our buses provide a lifeline for many passengers in the area who do not have access to transport of their own. The service will also enable passengers without access to a car to get to Lowther Castle and Gardens and enjoy a leisurely visit to this lovely attraction".

Fellrunner buses can be used free by bus pass (NOW card) holders and children under 17 and cash single and return fares are available for other passengers.

Full details of the new services can be found on the Fellrunner Village Bus website or by calling Fellrunner on 07734 529432 (office hours please).

MEMO information, contacts, charges and copy dates have moved! You can find them on the inside back cover.

Cover Artists

We'd like to thank **Barbara Hitch**
for kindly producing this month's cover for us

MEMO SHORTS

{ Short notes of thank-you or acknowledgement. Limited space, priority to recent contributors to the MEMO. }

Many thanks for the support for St Lukes Church, Ousby, at the Craft Show Display. £200 was raised.

Langwathby Parish Council

Thursday 21st September 2023 at 7.30 pm in Langwathby Village Hall

Present – 6 Councillors, WAFC Cllrs M Hanley, M Robinson

The following key issues were discussed: -

- Reports presented by WAFC Councillors Filed on Website
- Finance
- Back Lane Light/Coxen Lane – Langwathby With WAFC
- Edenhall Roadside Drainage and Flooding Issues. With Highways
- Ladies Walk – Footpath Signs With Contractors
- Langwathby Bridge – Cycling Signage and Road Markings. In Hand
- Knotweed - Edenhall – The infestation is being investigated. In Hand
- Langwathby Town Head Farm Corner A686/ Back Lane Flash Flooding Reported
- Langwathby Village Green
Authorised Planting of Daffodils Beneath Trees Opposite the Shop.
- Langwathby Village Hall Renovation Project.
Councillors were updated on progress
- Hedgehog Highway Project - Passed to School For Their Consideration.
- 49th AGM of Cumbria Association of Local Councils Reported
- Langwathby Bridge – Loose Metal Plate on Carriageway. Reported

Thursday 23rd November 2023

John Fleming – Parish Clerk.

A full set of minutes are available on www.langwathby.org



66/99



Come and play the
FOLS LEGENDARY PRIZE-WINNING XMAS BINGO
on November 10th at Langwathby Village Hall!
Doors 7pm Eyes down 7.30pm sharp

Book your seat with the school office on 01768 881295 and support Friends of Langwathby School

Culgaith Parish Council

Monday 4th September 2023 at 7.30pm at Blencarn Village Hall

Present – 7 Councillors, 1 WAFC Councillor. Two members of public. The following key issues were discussed: -

- WAFC Councillors Reports - Filed on Website.
- Section of Unofficial Footpath – By Tarn Villa, Culgaith
- Improvements to Culgaith Victoria Institute and Funding Advice.
- Skirwith Footway Light by Pear Tree House - Non-Functioning.
- Electricity NW – Tree Maintenance in Church Street, Skirwith.
- Road Safety Markings – Culgaith Entrance Roads
- HGV and Coach Traffic from Station Road to ‘Black Swan’ Junction.
- Skirwith Bus Shelter - Enhancement.
- Skirwith – Church St. Roadside Concrete Post and Rail Fence
- Skirwith Village Green. Renovation of Steps and Hand Rail - Path off Road by Beck Cottage.
- Flooding Issue - The Pea to A6412 Junction
- Culgaith Tarn Boundary – Not Stock Proof.
- Staingills/Off Back Road, Culgaith – Erection of New Farm building.
- Culgaith Drove Road – Demolished Bench
- 20mph Speed Restriction Through Culgaith.
- Silver Birch on Blencarn Village Green – To Prune Lowering Height.
- Potholes and Other Road Issues
- Defective Storm Drain Cover – By the Entrance to Pea Top Farm
- Skirwith Beech Tree – Permission Sought to Adorn with Christmas lights.
- 23/0518 – Helmwinds, Culgaith - Part retrospective change of use of agricultural land to mixed agriculture/horseiculture use, alongside the formation of a lunging arena and a dressage arena, formation of an access track and erection of a stable block and hard standing. Supported
- Date and Venue of Next Meeting

Monday 6th November 2023 – Culgaith Victoria Institute, Commencing at 7.30pm.

**Full minutes are available on www.culgaith.org.uk
John Fleming – Parish Clerk. culgaithpc@yahoo.co.uk**

Kirkland and Blencarn Village Hall



Coffee Mornings
Wednesday 8th and Saturday 25th November
10.30am - 12.30pm

£2 for coffee and cake, £1 extra slice to eat in or take away!

Whist Drives

Wed 8th and Wed 22nd November 7pm

£3 entry includes tea and biscuits and PRIZES!



Quiz Night !! Friday 17th November 7.30pm

Bring and Share supper and bring your own drinks.

Teams of four or come along on your own and join a team.

£2.50/adult £1/child There will also be a raffle!

50/50 Club winners

September

1st Gudrun Ravetz 2nd Helen Richards
3rd Gordon Braithwaite 4th Greta Bentham 5th Carole Clay

October

1st John Ellwood 2nd John Fleming 3rd Sian Bach
4th Anna Collier 5th Becky Wales

ST LUKES CHURCH, OUSBY **COFFEE AFTERNOON**

SATURDAY 11th NOVEMBER

In THE COMMUNITY CENTRE from 2.00pm-4.00pm

Festive Cake Stall

Hand-made Cards

Home-made Jams

Christmas Raffle

Also, tickets on sale for a **Shepherd's Crook**
which will be drawn on the day.

All Welcome!!



CULGAITH VILLAGE HALL (AKA VICTORIA INSTITUTE) UPDATE

UPCOMING EVENTS

Wine Tasting: **CHANGE OF DATE** from previously advertised. Now Wednesday 1st November, 7.30pm. Over 18s. Tickets £10 from Jon 07717845625

Village Hall AGM: Wednesday 15th November, 7pm. *Your Village Hall is run by a charity, please join us at the AGM to find out what's going on and what the future could look like.*

Please RSVP your attendance and/or if you would like to nominate anyone for the management committee of charity trustees, by contacting Helen helenleech2000@yahoo.co.uk, 07810414833 before 8th November.

Christmas Crafting: Wednesday 22nd November, 7pm to 9pm. *Come and have a glass of mulled wine / apple juice while trying out a variety of quick Christmas crafts. Age range: anybody old enough to wield scissors or strike matches.* Tickets £5 from Helen 07810414833

Table Tennis: Thursday 26th October, 7.30pm - 8.30pm with a small charge of £3.

WEEKLY EVENTS: **Pop Choir** is back on a Tuesday evening, **Gentle Flow Yoga** on Thursday morning, **Art At The Vic** and the ever popular **Vic Cafe** is on Thursday afternoon.

PLANNED FUTURE EVENTS

Pre-Christmas Family Bingo: Friday 15th December, 6pm

New Year Ceilidh: Saturday 6th January, 7pm - 10pm, with the Eden Valley Ceilidh Band. A fun evening for anyone over 11 years old

Details for both of these next month or general information email culgaiythhallbookings@gmail.com or telephone Jacqui 0777 2205 776

CULGAITH VILLAGE HALL 100 CLUB

September Draw

1st prize	£50 Flo Fearnley
2nd prize	£20 Pauline Topping
3rd prize	£10 Samantha Shepherd



**A Train Ride
can be Magic.
Join The Polar
Express and
you can
discover the
Magic in
Melmerby
Village Hall on
Saturday 25th
November.**

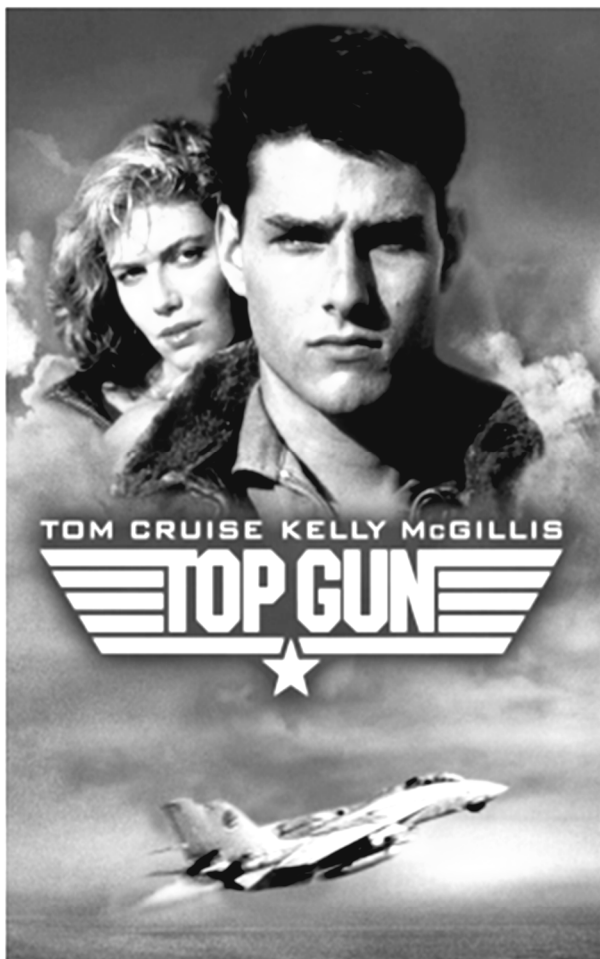
The Polar Express departs at 3pm on Saturday 25th November from Melmerby Village Hall. Dress for the ride in PJs and bring your Teddy Bear.

Entry is by ticket only. These may be available on the door but be safe and get your tickets early from Langwathby Stores & Post Office.

Kids must be accompanied by an adult. Tickets for all ages are £1 Return to the North Pole and back.

A Buffet Car will be selling sweets and popcorn and - for those boring adults - Teas and Coffee will be available.

This event is sponsored by Langwathby Stores & Post Office



**The Original Top Gun of 1986 is coming to
Melmerby Village Hall on Saturday 25th November
WITH the option of a pre-cinema American themed dinner by Janet –
dinner details and booking from
moveablefeasts@btconnect.com or tel: 07767 602687**

Cinema Tickets can be purchased from Langwathby Stores & Post Office £6

Film starts at 8pm Full American themed Bar



SAVE THE DATE!!
LANGWATHBY CHILDREN'S
CHRISTMAS PARTY

In LANGWATHBY VILLAGE HALL
On SUNDAY 17th DECEMBER 2023
At 3.00pm—6.00pm

If anyone is new to the village of Langwathby with children under 11 years old, please contact us so we can make sure they are added to Santa's list.

Contact Claire Burne
claireburne@btinternet.com or 07810512815

LANGWATHBY COMMUNITY FELLOWSHIP

The monthly meetings usually take place on the 3rd Wednesday of the month at 2pm at the Methodist Chapel
They are for everyone and each session includes a speaker, then refreshments.

.....



On 16th November we will have
A CRAFT AFTERNOON WITH LORNA

Whether you are new to our community, or have come to meetings previously, we look forward to welcoming you.

Remember, Remember the 4TH NOVEMBER
and THE BIG BREAKFAST at Langwathby Village Hall
10.30am—2.00pm



Craft & Gift Stall: Cards:
Cat and dog toys and equipment:
Raffle

All proceeds to Eden Animal Rescue
to help pay for their new Kennels.



SKIRWITH VILLAGE HALL

- ◆ **Tuesday 14 November Noon-1.30 pm.**
Gorgeous soup and cakes. Pop along and see us
- ◆ **Thursday 30 November 7.30 pm.**



HIGHLIGHTS RURAL TOURING SCHEME
Donelly & South's CHRISTMAS CRACKER.
A Christmas show with a sackful of singalong, wintry-wonderful songs. Tickets: £12
 Tel.01768 879024 /
 email team@skirwithvillagehall.co.uk /
www.highlightsnorth.co.uk

Melmerby and District Gardening Club

Water Gardens

Shelagh Todd Head of Horticulture at NR Training
Tuesday 21 November 2023, 7.30 p.m. Melmerby Village Hall
 Raffle Tea/Coffee

**M&DGC Annual membership of £15 per person
 due September 2023**

Visitors are very welcome to attend for £3.00

Any queries contact Lorna Egan (Secretary)

l.m.egan@btinternet.com or

Jennifer Baker (Treasurer) tonybakerdevelopments@gmail.com
 or 079234 30932

Melmerby Village Hall Lottery



September

- 1st £20 Batey Family
- 2nd £10 Renvoize Family
- 3rd £5 G & B Fletcher
- 4th £5 Batey Family
- 5th £5 B Lambert

October

- £20 J Bardsley
- £10 A Young
- £5 Brownlee Family
- £5 Armstrong Family
- £5 B Burford





Christmas Shopping Evening
Friday 3rd November
at Langwathby Village Hall
7.00pm-8.30pm
Lots of lovely stalls!!



LANGWATHBY & EDENHALL WI
QUIZ NIGHT

on FRIDAY NOVEMBER 17TH
in LANGWATHBY VILLAGE HALL

PIE & PEAS SUPPER
Vegetarian option available

TICKETS £7
RAFFLE

Tickets from Pam Jago 01768 88790 / 07950 042605
jagopamela2@gmail.com



THE VIC
CULGAITH'S FRIENDLY COMMUNITY CAFÉ
EVERYONE WELCOME!

Every Thursday 2pm – 4pm at the Victoria Institute, Culgaith

On 16th November it is the VIC's AGM—a fairly brief event held towards the end of the afternoon but worth staying on for as not only will you be offered an extra cuppa (!) but it will be your opportunity to hear what plans we have for the next 12 months and to make suggestions. Your views are always appreciated.

The last Thursday in November is
St Andrew's Day so come to the VIC for a
taste of Scotland!





Hayley's Christmas Big Band!

[NOTE CHANGE OF DATE!!]

We are delighted to be welcoming **HAYLEY'S LITTLE BIG BAND** back to Langwathby Village Hall for a festive evening of Christmas songs on **FRIDAY 22nd DECEMBER, 7pm - 10pm**

**Tickets are £20 and include a mince pie on arrival. There will be a bar for the evening so.....

DUST OFF YOUR SINGING VOICES AND DANCING SHOES AND JOIN US ON THE DANCE FLOOR!

Please email fundraisinglangwathbyvh@gmail.com to register for your tickets.



GAMBLESBY VILLAGE HALL

Film Night Season continues on 24th November with:

➡ **"EAST IS EAST"** ⬡

A Comedy of families, a chip shop, and an over-amorous dog.

Film begins at 8.00pm. Food served from 7.00pm

Film Only: £6 Film & 2-Course Meal: £12

Vegetarian option available. (Please request when ordering.)

Pay bar: cash only.

Please order food before 22nd November

To book, contact Vicki Everatt on 07741 474364 or email gamblesbycommunitycentre@outlook.com

MEETING POINT & OASIS

Thurs 2nd November from 10.15: "Meeting Point"
Enjoy a cup of coffee and conversation!

&

Thurs 16th November from 10.30: "Oasis"
Coffee, a short reflective service and light lunch

at Langwathby Methodist Church

All are welcome





The 15th Annual Melmerby Scar Christmas Challenge—Wednesday 27th December 2023

We would love to see you all at the Melmerby Scar Challenge this year: runners and walkers all welcome.

Work off your Christmas waistline by joining us on a challenging route across the top of beautiful Melmerby Scar.

Our route is circular—it begins and ends at the village hall, Melmerby and covers 7 miles/ 11 km.

We climb to a height of 709m, which in good conditions takes roughly 3 hours to walk or roughly an hour to run.

- Registration from 8:45am at the Village Hall, Melmerby.
- Safety briefing: 9:45am
- Start time: 10:00am prompt
- Fee - £8.50 per adult, £3.50 per child - includes a warm meal after the event. Cash only, please.
- Raffle—proceeds to go to Hospice at Home (£1 a square)
- Licensed Bar, hot & cold drinks available
- To reserve your meal or for more information please email joanna.brownlee@gmail.com
- Runners and walkers are welcome
- Dogs are welcome but must be kept under control at all times. (Please pick up after them.)
- Proceeds go to Melmerby Village Hall funds.



theWI
INSPIRING WOMEN

Langwathby & Edenhall WI

We meet on the 1st Wednesday of the month in Langwathby Village Hall

November 1st: DABBLE EVENING
Amanda, Hazel, Kath

Competition: A Tree Ornament
Hostesses: S Grave & M Sutcliffe

Please note meeting starts at 7.30pm

Feel better, move better, balance better, sleep better

If that appeals to you then Gill Hunter and Jackie Watts invite you to local yoga classes at Skirwith or Melmerby where you'll find a friendly group of people to practise with.

Beginners & more experienced equally welcome.

Please get in touch for more details & with any questions.

**Gill's class - Skirwith Village Hall, Mondays, 4 pm - 5.30 pm.
email gillian_k_hunter@hotmail.com**

**Jackie's class - Melmerby Village Hall
Thursdays, 6.30 pm - 8 pm.
email jackiewatts@hotmail.com**

We look forward to hearing from you.



PUBS, SHOPS & RESTAURANTS

MEMO information, contact details, charges and copy dates have moved! You can find them on the inside back cover.



BUSINESS ADVERTISEMENTS
CONTACT JEFF TRUMAN
FOR DETAILS AND APPLICATION
FORM
See back cover for Charges
T: 01768 881163

The Shepherds inn, Melmerby

Opening times January - April

Mon & Tues—CLOSED

Wed: Takeaway Only 5pm-7pm |

Thurs: 6pm-10pm | Fri & Sat: 5.30-11pm

Sun: Noon-9pm

We will still be doing our Shepherds at Home **takeaway menu** during our opening hours as well as Wednesdays 5pm-7pm



Fish on Fridays! Creative and delicious weekly specials

Traditional Sunday lunch served all day

Tel: 01768 889064 Village Green,

Melmerby CA10 1HF

Facebook: The Shepherds Inn Website: shepherdsinn.pub

SUPPORT GROUPS: for details see the MEMO website in the October edition.

Local Citizens' Advice: phone 01768 891503

Salvation Army Food Bank, Hunter Lane, Penrith

MIND: Money & Mental

Health: <https://tinyurl.com/w5ctfo9>

Christians Against Poverty: Tel' 0800 328 0006

PUBS, SHOPS & RESTAURANTS (continued)



The Shepherds Inn

The Village Green, Langwathby
CA10 1LW

E: stephen@shepherds-inn.co.uk
T: 01768 881463

Serving good homemade food every day from 12 noon until 7.30pm including our famous Wathby whale and shortcrust steak and ale proper pie.

And, we have been told,
The best shortbread in the World!



Scan for the menu



THE OLD VILLAGE BAKERY

'We are open'

Monday to Sunday
9.00am- 4.00pm

Breakfast served 9.00-11.30 Daily

Lunch served 11.30-3.00 Daily

or grab a coffee & treat yourself to a cake

Booking recommended on 01768 881811

&

'Upstairs'

Open 10.00-4.00

or by appointment. Please call Deborah on
07739071141

Ladies fashion, Gifts & Interiors

Looking forward to seeing you all...

T: 01768 881 811 The Old Village Bakery |
Melmerby | CA10 1HE

LANGWATHBY STORES

&

POST OFFICE

Shop & Post Office

Opening Times:

Monday to Saturday 7am to 7pm

Sunday 8am to 6pm

For those everyday essentials
and an excellent selection of
wines (including fine wines),
spirits, beers, lagers!

Plus hot & cold drinks!

Also remember to check out our
regular special offers in store.

*Orders taken for Delivery or
Collection*

Telephone:
01768 881342



EDENHALL COUNTRY HOTEL



**Fish & Chip Friday
Bar meals served daily**

12pm-2pm & 6pm-9pm

Fish, Homemade Chips & Mushy Peas for
only £13.95

Sumptuous Sunday Lunch from £15.95

Lunchtime meals served 12pm to 2pm

Friday, Saturday & Sunday.

Evening meals served every evening from

5:30pm—9:00pm

Edenhall Country Hotel, Edenhall, Penrith,

CA11 8SX T:01768 881454

www.edenhallhotel.co.uk

Nisa
Making a Difference Locally



COMMUNITY ACTIVITIES

VILLAGE HALLS

Langwathby Village Hall bookings - please contact Brenda Shannon on 07871 994988 (please leave a message, and we'll get back to you) or by email bookings.vhlangwathby@gmail.com.

LOCAL PLAYGROUPS

A friendly, welcoming playgroup, open to everyone from local and surrounding areas during term time, offers a variety of toys, craft sessions, outings, snacks and story/song time suitable for 0-4 years.

Langwathby - Term time only. Fridays 1pm till 3pm Langwathby Village Hall. Contact Rachel Buckle 07958 321335.

Culgaith - 'Come and Play' at Culgaith School, 2pm-3pm

Tues 12th Sept, Fri 29th Sept, Tues 10th Oct, Fri 20th Oct - special invite to sponsored walk. Fri 3rd Nov, Tues 14th Nov, Wed 29th Nov 9-10 am - special invitation to book morning, Fri 8th Dec. Contact admin@culgaith.cumbria.sch.uk or 01768 88655

BUSINESS AND LOCAL SERVICES

Acupuncture & Massage Penrith. Experienced Acupuncturist & Deep Tissue Massage Practitioner, treating people with a wide range of health and wellbeing concerns. I look forward to welcoming you into a safe, nurturing and healing space. Contact: Jules Burrell AAC, Tel 07890 197759 www.acupuncturepenrith.co.uk

ANDREW BRISCOE CARPET & UPHOLSTERY CLEANING

30 Years experience in the carpet cleaning industry.

Van mounted carpet cleaning system for all types of carpets.

Upholstery cleaning including Viscose, Linen and fine fabrics.

Rug cleaning drop off or pick up service.

National Carpet Cleaners Association Corporate Member

Office Tel: 01768 865812 Mobile: 07850 805251

Acrestone Cottage, Winskill CA10 1PD



SERVICES

TARMACADAM
DRIVEWAYS
FOOTPATHS
GROUNDWORKS
LANDSCAPING



adamoneil78@hotmail.co.uk | 07896 029 454



11th November: Remembrance Day. Lest we forget the horrors of war.
13th November: Odd Socks Day marks the beginning of Anti-Bullying Week. All you have to do is wear odd socks to school or work.



BUSINESS AND LOCAL SERVICES (continued)

BORDER WATER TECHNOLOGIES LTD:

We undertake all aspects of drainage, groundworks, erosion control, wetland/pond creation, CCTV surveys of drains; also design, installation, maintenance of sewage treatment systems & tank surveys for house sale. Contact 01768 881612. Email: admin@borderwatertechnologies.co.uk or www.borderwatertechnologies.co.uk



Tel: 01768 881413. Mobile: 07510 416851
Email: mc.castleview@hotmail.com
www.castleviewconstruction.co.uk

New Builds - Extensions - Renovations

All aspects of joinery, building, plastering and tiling.
Suppliers and installers of UPVC windows, doors, conservatories, fascias and soffits.
Free estimate and guaranteed to beat any like for like. Written quotation.

Langwathby Hall, Langwathby, Penrith CA10 1LW
Call the Salon for Hair Appointments 01768 889380
For Beauty Call Marie on 07944 643337

Plenty of FREE PARKING.

Chloe's Hair & Beauty offers all aspects of Hair Dressing & Beauty Treatments for Women, Men and Children.

HAIR & BEAUTY

Late night appointments available Wednesdays & Thursdays.

COLIN DAWSON LTD: ELECTRICAL AND DAIRY ENGINEERS



All types of Electrical Installation and testing carried out.

Bagged animal, poultry, and wild bird seed.

A wide range of household and electrical supplies, workwear, tools and general hardware is

available from our shop at High mill, Langwathby.
Tel: 01768 889084 email: dawson@xlninternet.co.uk
www.colindawsonltd.co.uk

CULGAITH SAFE & LOCKS: 24 hour Emergency Response 07790 613320

Services provided: Emergency entry to your home, business or car/van; Lock servicing/replacement and fitting; Key cutting, home and business security advice.
Website: www.safeandlocks.com E-mail: safeandlocks@hotmail.co.uk



12th November: Diwali is the Hindu festival of Lights, which is celebrated with fireworks, dancing, music, the decoration of homes and feasting. The most important aspect is decorating with lights, especially the traditional Diwali candles.



Eddie Potts : Decorative Painter

All aspects of Interior / Exterior paintwork undertaken.
Experienced painter of High End Bespoke fitted kitchens.
Specialist paint effects available - Murals, Marbling etc.
email: eddiepotts85@gmail.com Mobile: 07968 642661

FELLSIDE GROUNDWORKS LTD: Council approved– all types of commercial and domestic groundwork undertaken: Drives, tarmacing, concreting, curbing, walling, drainage etc. Also plant hire and small tool hire at reasonable rates. Please call John on 07825 768911 or 01768 881158. Or email fellside.groundworks@gmail.com



Covering all your electrical works for the last 25 years.
Our local, friendly, and reliable team cover all aspects of electrical work.
Contact us today for a free, no obligation estimate.



Tel: 017684 80754 - 24 Hour Emergency Response
Email: info@fieldviewelectrical.co.uk
Web: www.fieldviewelectrical.co.uk



12 Moorside, Hunsonby, Penrith CA10 1PL



IAN RIGG

Yoga, Meditation & Wim Hof Method with Ian Rigg

Prioritise your own health and well being and become stronger and more resilient. The following classes and workshops are available in Langwathby and Penrith:

Budokon Yoga and Mobility classes, Mindfulness meditation and compassion based interventions,

Wim Hof Method Fundamentals Course.

Contact: Ian Rigg 07743 967222 or visit ian-rigg.com

LAMBKINS DAY NURSERY & PRE-SCHOOL CENTRE Providing Outstanding Care and Education for children aged 3 months to 8 years old. Flexible free 15-30 hours available. Exciting opportunities for the children including forest school and creative workshops.

Call the team for more information: 01768 881888
or lambkinsdaynursery@hotmail.co.uk



ELECTRICAL

Your Domestic and Commercial Electrician

As a local electrician with over 12 years experience, I offer a friendly and professional service in all aspects of electrical work. I am fully registered and insured with the NICEIC. Free design advice and quotations offered. All works will always be of the highest standard and signed off appropriately. Why not give me a call today.

National Inspection Council for Electrical Installation Contracting



07568 729010

Marius Erasmus - Culgaith, Penrith, CA10

me.electrical@hotmail.com

M.J. ELECTRICAL Friendly and Reliable, Local Electrician based in Gamblesby. All aspects of electrical work undertaken. Free quotations available. Call Michael for all your electrical queries: 01768 881799 or 07760 444525
Email: mjenningselectrical@gmail.com

BUSINESS AND LOCAL SERVICES (continued)



Mobile: 07811 362632 Tel: 01768 897151

Email: paulmoffet@hotmail.co.uk

**New builds, extensions and garden/
boundary walls**

Fully qualified with 25 years experience

PINE TREE NURSERIES & GARDEN DESIGN SERVICES



Glassonby CA10 1DZ Tel: 07899 722530 / 07391 450735

Email: pinetreenurseries@gmail.com

Wander round our display beds and choose from a large selection of perennials, shrubs, conifers and grasses. Friendly advice always available.

Opening times: Wed - Sun 10am - 5.30pm including Bank Holidays.

www.pinetreenurseries.co.uk

PS Tree ; For all your tree and hedge care needs.

Providing fully qualified and insured tree and hedge services. Including pruning, reductions, planting, health assessments, felling, hedge management and cutting to shape.

All waste can be removed or chipped as required.

Previous work can be viewed by following PS Tree on Facebook

For a free, no obligation quote, please contact Dave Willetts

Tel; 075000 49755 www.pstree.co.uk email; david.willetts2@gmail.com



RACHEL EWBANK – Direct seller of Flamingo Paperie greetings cards, gift wrap, stationery goods (including Christmas cards, Advent Calendars, Bunting etc) and paper craft kits.

Contact me for brochure: Tel: 07760 230945

Email: rachel.ewbank@btinternet.com

Settle House, Salkeld Road, Langwathby, CA10 1ND

ROY HODGSON LOCAL BUILDER: All aspects of building work undertaken. No job too small. Fully qualified (C&G) with over 30 years experience.

For a free, no obligation quote please call 07721 730108 or 01768 88658

ROWAN Tree Surveys

t 01768 881207 m 07517 489527

phil@rowantreesurveys.co.uk www.rowantreesurveys.co.uk

Phil Scott-Collins Arboricultural Consultant providing professional tree condition reports, tree risk assessments and development site tree surveys.



TIM METCALFE JOINER AND TILER: All types of joinery and tiling work undertaken. Fully qualified with 25 years experience. All size jobs considered. Call 01768 881827 or 07977 571237



TITHE COTTAGE FURNISHINGS



Professional, friendly service making all types of curtains, roman blinds, pelmets, cushions and more. Free home measuring service and can provide all linings, tapes etc. All you need to do is choose your material! A growing selection of curtain poles, tracks and trimmings are also available. Alternatively why not recycle existing furnishings into new window dressings? Please call Catherine Atkinson on

01768 889179 / 07443 899659 or email:tithecottagefurnishings@talktalk.net



TLC HOME CARE

Home Care Services

ABOUT US

TLC Home Care is a home care service offering person centred care packages to individuals in their own home in Fellside and surrounding areas. Services include assisting with meal preparation, shopping, light cleaning duties and companion calls.

TLC Home Care

Tel Claire: 07947 774451

Email: tlchomecareservices11@gmail.com

What was at Gawtree?

Local tradition, told me by a local lass whom her school friends derided for telling it, says that there was a village at Gawtree centuries ago, till the plague emptied Hunsonby and the Gawtree folk moved there for better farmland. By 1770, Gawtree was only one house, "Gotree", on the north bank of its beck, Robberby Water, which is still there now. The placename recalls a prominent tree belonging to a Norse farmer called Gauti. In 1726, Joseph Hutchinson, a local farmer who owned his own land, gave Hunsonby School 50 acres of his land at Gawtree to help the school finances.

What became of Udford?

The road that leads past the South Lodge of Eden Hall ends at the ancient ford over the Eamont at Udford, part of a major driving route till the railways came in mid-19th century. Here the Shire Toll was levied to help run Cumberland's expenses. This toll was taken on the County boundary only at major points of entry, eg Gilsland, and also Carlisle itself. The foundations of a few vanished buildings were visible on the Cumberland bank of the river in the 1970s. These doubtless included an inn. The ford was a diagonal one, like Langwathby's. When rights of way were registered under the recent Act, nobody remembered to register this ancient ford! The route continues south.

Many thanks to Jeremy Godwin for his research.

About The MEMO A team of over 40 volunteers collate, type, proof & distribute your MEMO each month to produce a community based publication. We are grateful for the support given by businesses & sponsors. You can contact us as follows:

For editorial enquiries for next issue: editor@midedenmemo.org.uk

For business advert enquiries contact our business coordinator:
Jeff 01768 881163; email: jeff.midedenmemo@gmail.com

For payment related enquiries contact our treasurer:

Martin email: treasurer@midedenmemo.org.uk

For community (non-business) advert / general enquiries contact:

Chris 01768 881015; email: chris.midedenmemo@gmail.com

**All copy for the December issue by
NOON FRIDAY 10th NOVEMBER 2023**

Items ready to be typed can be sent directly to -
midedenmemo@gmail.com

Payment should accompany the advert request .

Cheques payable to 'The MEMO'; Address on request from Chris/Jeff
Payment can also be made by **BACS/electronically using the following details:**

A/c Name: The MEMO **A/c Number:** 30875570 **Sort Code:** 20-66-97

The Committee maintain the right to edit and/or withhold material as deemed necessary.

MEMO distributors will be able to collect from Langwathby Church on Wednesday 22nd November 2023

MEMO CHARGES FROM 1ST JANUARY 2023

Non-Business Adverts (Individual/Groups/Clubs/Education):

£7 per third of page entry or £70 subscription (eleven thirds for the year). Sponsorship (name on front cover) £65 minimum - this donation does not include advertising within the Memo.

Business Adverts:

Standard Business Directory Advert £8 per issue or £80 subscription (11 issues) Max. 40 words excluding title & contact details plain text.
Premium Business Directory Advert £12 per issue or £120 subscription (11 issues) Max 1/6 of a page with border, image and formatting.

MEMO COPY DATES FOR 2023

10th November

MEMO COPY DATES FOR EARLY 2024 (Full list next issue)

12th January, 9th February

CHURCH SERVICES IN OUR CHURCHES AND CHAPELS FOR NOVEMBER 2023

Sunday 5th November

Addingham

All Saints (Fourth before Advent)

9.30am

Holy Communion

Rev Fiona Jenkins

Culgaith

11.00am

Methodist led service

Revd Dave Milner

Fellside Churches

9.30am

ATTEND MELMERBY

Gamblesby

10.00am

Little Acorns

Claire Slee

Langwathby Methodist Chapel

11.00am

Morning Worship

Rev G Belford

Langwathby Methodist Chapel

5.00pm

Taize

John Doidge-Harrison

Melmerby

9.30am

Holy Communion

Revd Canon K Butterfield

Sunday 12th November

Addingham

Remembrance Sunday (3rd before Advent)

ATTEND LANGWATHBY

Culgaith

ATTEND LANGWATHBY

Gamblesby

2.00pm

Remembrance

C Blackshaw

Kirkland

9.30am

Remembrance

Julie Barrett

Langwathby Village Green /
St Peter's Church

10.45am

Remembrance

Bryan Gray

Sunday 19th November

Culgaith

Second before Advent

11.00am

Holy Communion

Revd Canon K Butterfield

Langwathby Methodist Chapel

11.00am

Morning Worship

Joan and Ray Wager

Ousby

10.00am

Holy Communion

Rev Fiona Jenkins

Sunday 26th November

Culgaith Village Hall

Christ the King (Sunday next before Advent)

10:30am

Café Church

Lay led

Edenhall

3.00pm

Holy Communion

Revd Canon K Butterfield

Gamblesby

10.00am

Little Acorns

Claire Slee

Gamblesby

2:00pm

Afternoon Worship

L Tomlinson

Langwathby St Peter's

11.00am

Holy Communion

Revd Canon K Butterfield

Skirwith

9.30am

Holy Communion

Rev Lindsay Harrod